

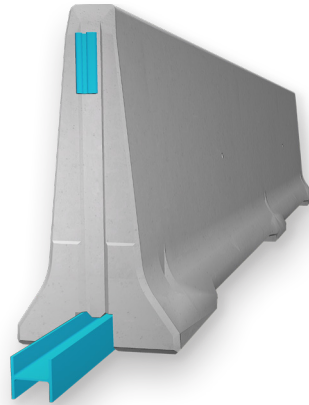
REBLOC 120FA_6_SF

Technical Datasheet

REBLOC 120FA-6-SF

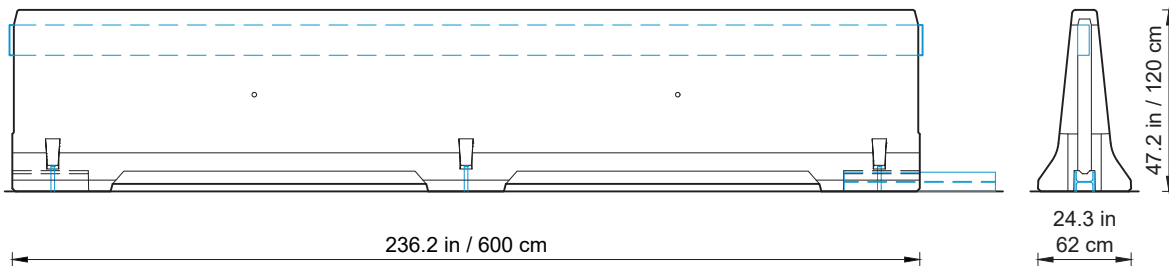
Precast Concrete
Vehicle Restraint System

Permanent System
Free standing



Technical data

Test level	TL3
Working width	39.4 in (1.0 m)
Dynamic deflection	15.8 in (0.4 m)
Installation	free standing on asphalt concrete
Application	single-sided double-sided
Minimum installation length	335 ft (102 m; 17 elements)
Initial/end anchorage	required (6 screwbolts Ø 20/300 mm) or force closure
Dimensions L x W x H in cm	236.2 x 24.3 x 47.2 in (600 x 62 x 120 cm)
Weight/element	approx. 10538 lb (4780 kg)
Curve radius	$r \geq 476$ ft (150 m)
Coupling/exposed steel parts	fully integrated, exposed parts hot-dip galvanized



all dimensions in cm